

### Typical Features

- ◆ Wide input voltage range 85-305VAC
- ◆ Meet EMI CISPR22/EN55032 Class B adapted with power supply
- ◆ Operating temperature from -40°C to +85°C
- ◆ Conform to CE & RoHS regulation
- ◆ Compact size, Industrial grade design
- ◆ PCB DIP Mounting



### Application Field

**LC-30W1D Series** are modular filters which can be adapted with the AC-DC power supplies to improve the EMI noise and to suppress the surges. The maximum input voltage of the adapted AC-DC power supply should be less than the maximum operating voltage of this filter, the maximum input current of the AC-DC power supply should be less than the filter rated operating current.

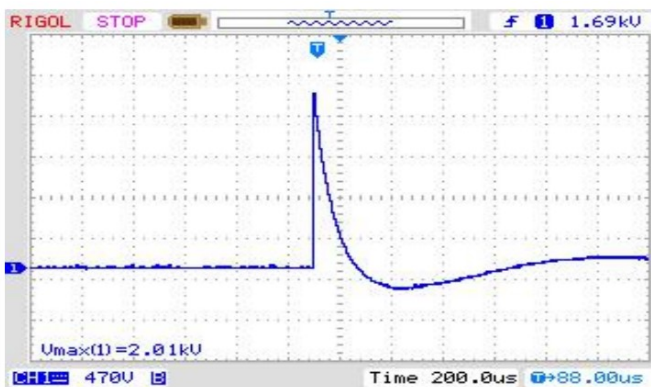
### Typical Product List

Part No.	Input voltage Range (VAC)	Max Rated Current (A)
LC-30W1D-1	85 - 305	1.0
LC-30W1D-2	85 - 305	1.0

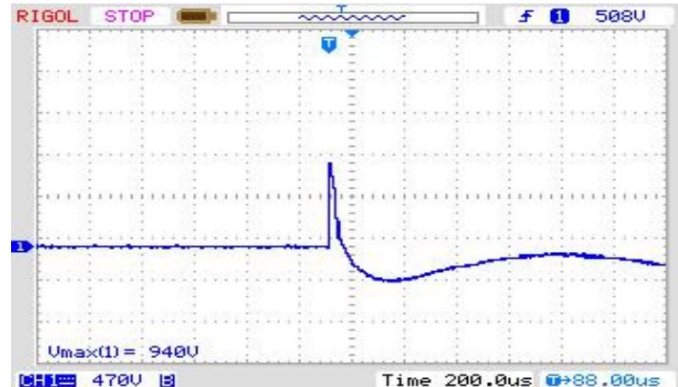
### General Performances

Item	Operating Condition	Min.	Typ.	Max.	Unit
Operating Temperature	--	-40	--	+85	°C
Storage Temperature	--	-55	--	125	
Soldering Temperature	Wave soldering	260±4°C, time 5-10S			°K
	Manual soldering	360 ±8°C, time 4-7S			
Case temperature rise during operation	220VAC@0.5A	--	--	6°	°K
	220VAC@1.0A	--	--	22°	
Insulation Voltage	Line-GND, Test 1 min, leakage current ≤5mA	--	2000	--	VAC
Unit Weight	--	30g (Typ)			

### EMC Performance



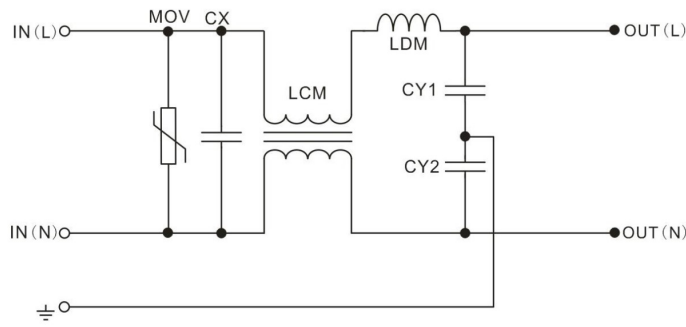
Input voltage waveform (differential mode 2.01KV)



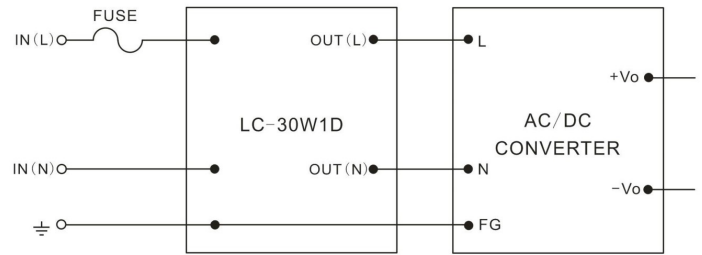
Output voltage waveform (differential mode 0.94KV)

**Application recommendation**

**1. Internal Schematic**

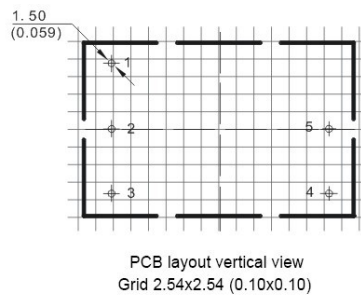
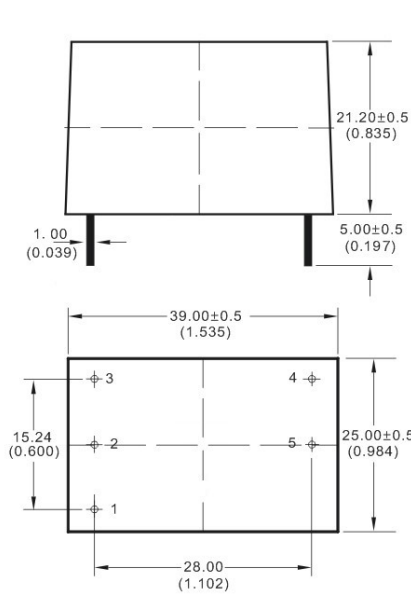


**2. Typical Application Circuit**



**Mechanical Dimensions**

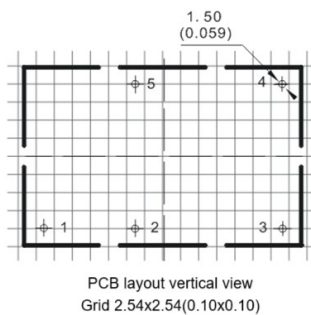
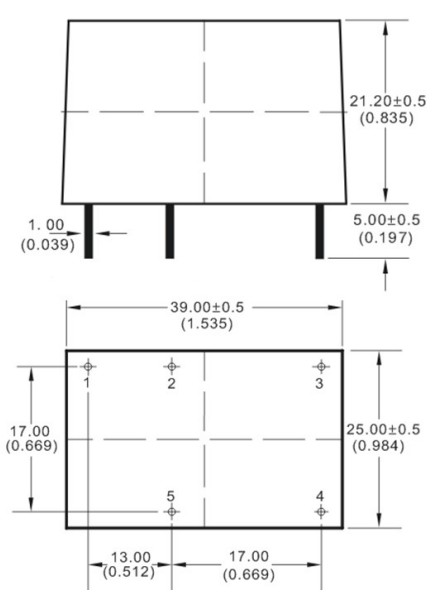
**1. LC-30W1D-1**



Pin No.	Description
1	GND
2	IN(N)
3	IN(L)
4	OUT (L)
5	OUT (N)

**Note:**  
Unit: mm (inch)  
Pin diameter tolerance:  $\pm 0.10$  ( $\pm 0.004$ )  
General tolerance:  $\pm 0.50$  ( $\pm 0.020$ )

**2. LC-30W1D-2**



Pin No.	Description
1	GND
2	IN(N)
3	IN(L)
4	OUT (L)
5	OUT (N)

**Note:**  
Unit: mm (inch)  
Pin diameter tolerance:  $\pm 0.10$  ( $\pm 0.004$ )  
General tolerance:  $\pm 0.50$  ( $\pm 0.020$ )

Packaging Code	Dimensions L x W x H	
D	39.00X25.00X21.20 mm	1.535X0.984X0.835 inch

**Guangzhou Aipu Electron Technology Co., Ltd**

Address: Building 4, HEDY Park, No.63, Punan Road, Huangpu Dist, Guangzhou, China.

Tel: 86-20-84206763 Fax: 86-20-84206762 HOTLINE: 400-889-8821

E-mail: sales@aipu-elec.com Website: <https://www.aipupower.com>